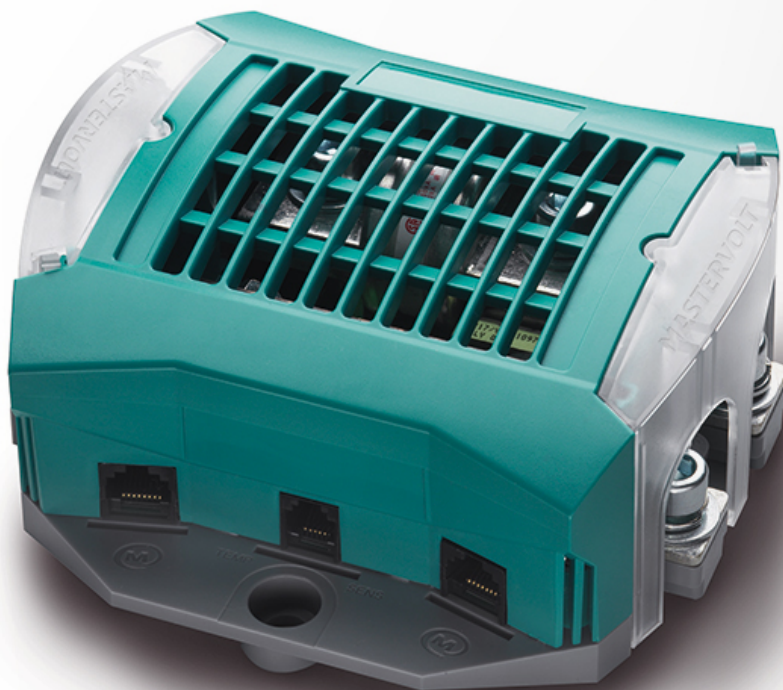


MasterShunt 500



Product code: 77020100

MasterBus integrated battery monitor, with detailed information on the status of your batteries for an optimised charging process, incl. voltage, current, remaining time and consumption capacity in percentage.

With an intelligent connection system, the MasterShunt is easily connected to the DC distribution. The integrated system clock combined with command-based events custom automates the system to your needs.

Example of system automation: The generator should start automatically when the batteries are almost depleted. The MasterShunt also provides a robust built-in main fuse that can safely interrupt short-circuit currents of 20 kA.

Specifications

General specifications

Languages on display	ENG, NL, DE, SP, IT, FRA, FIN, SWE, DEN, NOR
Battery voltage	12, 24 or 48 V DC
MasterBus powering	yes
Dimensions, hwxwd	150 x 150 x 65 mm 5.9 x 5.9 x 2.6 inch
Weight	1 kg 2.2 lb
Current	300 A cont. / 500 A for 5 minutes
Main fuse	500 A T-fuse (300 A cont. at 40 °C)
System functionality	alarm, timers, auto start/stop for the generator
Programmable alarms	warning low voltage, warning low state of charge, high voltage
Delivered with	MasterShunt, temperature sensor, MasterBus terminator, MasterBus cable, isolation cover for DC connections

Technical specifications

Temperature range (ambient temp.)	-20 °C to 50 °C -4 to 122 °F
Protection degree	IP21

Specifications battery charger

Battery types	gel, AGM, wet, Lithium Ion, spiral
---------------	------------------------------------