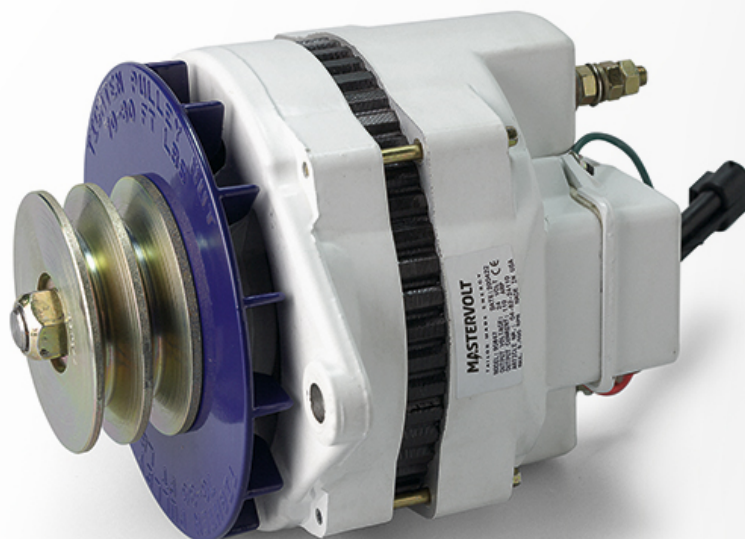


# Alpha 24/110 MB



Product code: 48524110

- Fast & complete charging of starter and service batteries.
- Power supply for all consumers.
- 12 V and 24 V versions.
- 75 A to 150 A charge current.
- Standard delivered with Alpha Pro MB charge regulator for an optimal performance and longer-lasting batteries

Using a Battery Mate or battery isolator in conjunction with an Alpha alternator makes it possible to easily charge two or three separate battery sets simultaneously.

### **For all engine types**

Alpha alternators are equipped with several fixations for customised alternator brackets, available from your installer or engine supplier. Some engine brands come with Mastervolt alternator brackets as an option.

### **Fast charging, even at a stationary rpm**

Standard alternators only supply the specified capacity at a high rpm. The Mastervolt Alpha alternator is specifically designed for powerful charging, even with a low engine rpm.

### **Multi-belt pulley**

The 12/130 and 24/75 models are also available with a multi-belt pulley.

### **Performs above 40 °C**

Forced cooling by fan operation of the pulley provides a lot of power in higher temperatures, especially close to the engine.

# Specifications

## General specifications

Charge regulation	an Alpha Pro MB regulator comes standard with all models
Total charge current	110
Cable length regulator/alternator	1.5 metre, oil resistant connection cable - delivered as standard
Belt section	2xA
Isolated	yes
Directions of revolutions	2
Mounting	six o'clock
Weight	10.1 kg 22.3 lb

## Technical specifications

Charge voltage Absorption	28.5 V
Charge voltage Float	26.5 V
Pulley (double) diameter	88 mm 3.5 inch